

Village of Minooka

Construction Standards for Concrete Sidewalks

The sidewalks shall be constructed in accordance with the requirements of the Standard Specifications for Road and Bridge Construction in Illinois, latest edition; all Federal and State statutes or regulations; Village of Minooka Subdivision Regulations; in addition, the following specifications shall apply. In case of discrepancy, the Village of Minooka Subdivision Regulations shall govern.

Concrete Sidewalk Specifications

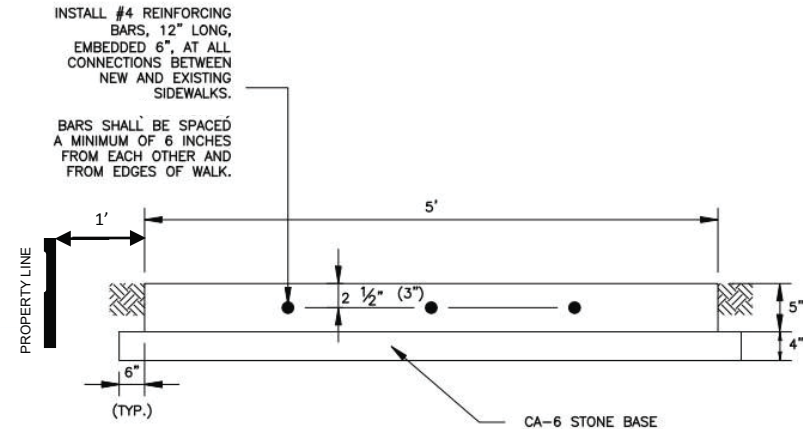
- Sidewalk shall be constructed in accordance with Section 424 of the Standard Specifications.
- Shall be four feet (4') or five feet (5') in width in residential zones as directed by the Village.
- Shall be a minimum of five inches (5") thick.
- If a public sidewalk crosses a driveway the minimum thickness shall be six inches (6") thick.
- Concrete shall be class SI.
- The base course shall be a minimum of four inches (4") thick of compacted CA-6 and shall be included in the price bid for concrete sidewalk.
- Form boards are required to be a minimum dimension of 2" x 6".
- The sidewalk shall be struck off, finished to a true and even surface with floats and trowels, leaving a smooth even surface.
- The surface shall be given a final finish by a brush drawn across the sidewalk at right angles to the edge of the walk, producing a uniform slightly roughened surface with parallel brush marks.
- The surface shall be divided by grooves constructed every five feet (5'), at right angles to the edge of the walk. These grooves shall extend to one quarter (1/4) the depth of the sidewalk and shall be no less than one eighth inch (1/8") nor more than one quarter inch (1/4") in width.
- The sidewalk shall be edged with an edging tool having a one-quarter inch (1/4") in width.
- One half-inch (1/2") full depth expansion joints consisting of preformed joint filler shall be placed between the sidewalk and adjoining sidewalks, driveways, ramps.
- Two number four 1/2" smooth tie bars 12" long, embedded 8" at all connections between new and existing sidewalks and ramps and curbs for 4-foot-wide sidewalks. Three number four 1/2" smooth tie bars will be required for sidewalks 5-foot-wide and greater. Bars shall be spaced a minimum of 6" from each other and 12" off each edge. A 1/2" plastic cap shall be placed on each end of the tie bar adjacent to the expansion joint.
- An IDOT APPROVED 1600-WHITE membrane curing compound shall be used to protect the sidewalk during curing.
- Handicap sidewalk ramps shall be constructed in accordance with section 424 of the Standard Specifications. The ramp shall be Type B and shall be required where ever sidewalks or bike paths meet curb and gutter Etc., railroad crossing etc.
- Cold weather protection shall be required if the ambient air temperatures drop below 32- degrees Fahrenheit and left on until an acceptable length time to allow for curing.

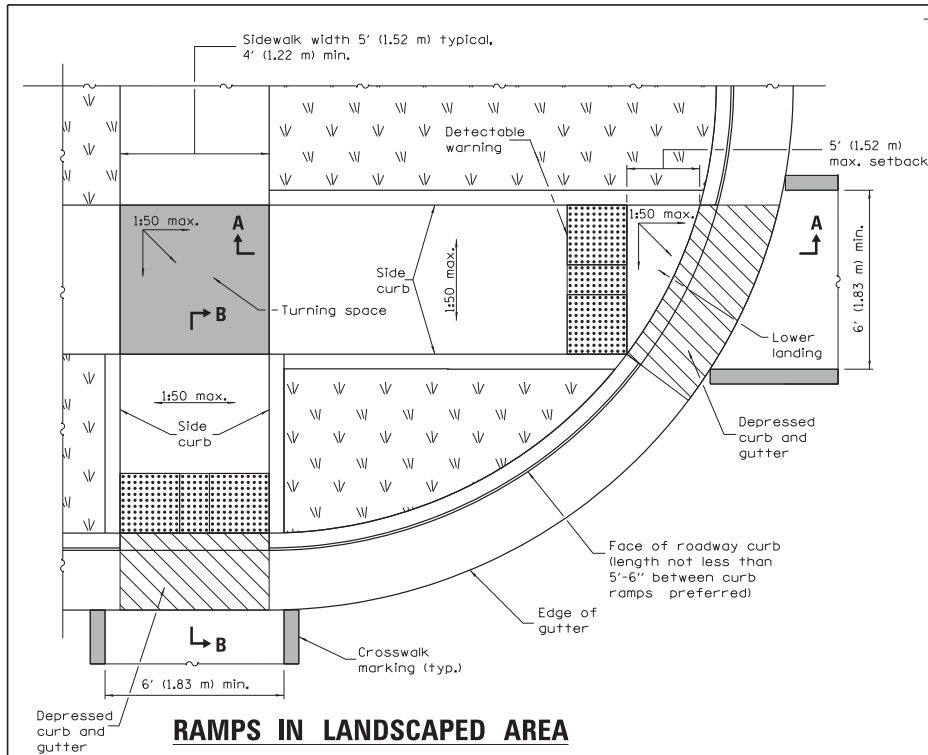
SIDEWALK

SIDEWALK CONSTRUCTION SHALL BE IN ACCORDANCE WITH THE MOST CURRENT EDITION OF THE ILLINOIS DEPARTMENT OF TRANSPORTATION STANDARD SPECIFICATION FOR ROAD AND BRIDGE CONSTRUCTION, THE CURRENT VILLAGE CODE AND THE FOLLOWING SPECIFICATIONS.

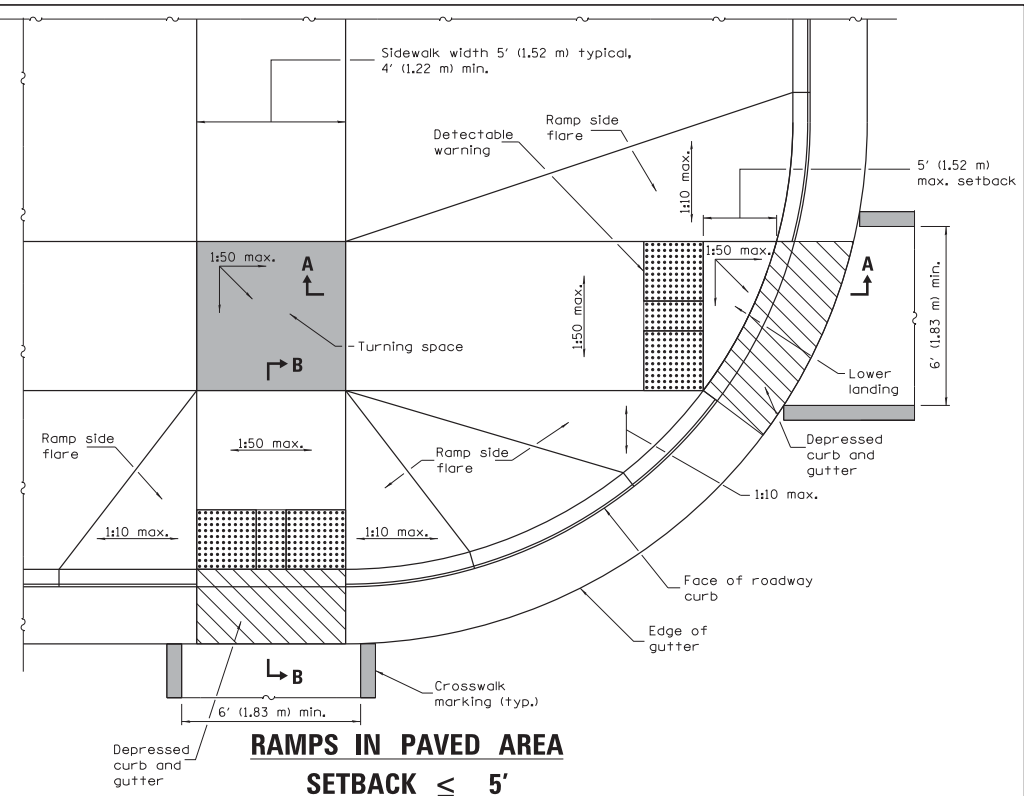
1. DIMENSION WIDTH SHALL BE 5 FEET IN RESIDENTIAL SUBDIVISIONS AND SHALL HAVE MINIMUM WIDTH OF 6 FEET IN COMMERCIAL SUBDIVISIONS
2. MINIMUM SIDEWALK THICKNESS IS 5 INCHES AND ACROSS DRIVEWAYS IS 6 INCHES
3. 4 INCH AGGREGATE BASE COURSE SHALL BE COMPACTED CA-6
4. ½ INCH PREMOULDED EXPANSION JOINTS SHALL BE PROVIDED:
 - A. | AT PROPERTY LINES
 - B. | AT SIDEWALK INTERSECTIONS
 - C. | AGAINST DRIVEWAYS, CURB AND GUTTERS, AND BUILDINGS.
 - D. | OR INTERVALS EVERY 100 LINEAR FEET
5. TOOLED CONTRACTION JOINTS SHALL BE PROVIDED AT 5 FOOT INTERVALS.
6. W 6 x 6 WELDED WIRE FABRIC SHALL BE USED THRU DRIVEWAY
7. TWO #4 REBAR 15 FEET LONG SHALL BE PROVIDED AT ALL UTILITY TRENCHES AND ANY LOCATION WITHIN 8 FEET OF A TREE CENTERED ON THE ROOT BALL
8. CONCRETE SHALL BE CLASS SI
9. FORMBOARD REQUIREMENTS: MINIMUM 2 INCHES X 6 INCHES
10. FIBER MESH CONCRETE WILL BE ALLOWED IN LIEU OF WELDED WIRE FABRIC IF APPROVED PRIOR TO POUR
11. MAXIMUM CROSS SLOPE IS 2% AND MINIMUM IS 0.5%
12. SIDEWALK TIE BARS SHALL CONSIST OF THREE 12 INCH x ½ INCH SMOOTH BARS WITH ½ INCH PLASTIC DOWEL CAPS ADJACENT TO THE EXPANSION JOINT THAT ARE 100MM LONG
12. AN IDOT APPROVED EQUAL 1600-WHITE MEMBRANE CURING COMPOUND SHALL BE USED TO PROTECT THE SIDEWALK DURING CURING
13. THE MAXIMUM LONGITUDINAL SLOPE ON A PUBLIC SIDEWALK SHALL BE 5.0%. WHERE 5.0% OR LESS LONGITUDINAL SLOPES CANNOT BE ACHIEVED, RAMPS MUST BE DESIGNED TO CONFORM TO THE STATE OF ILLINOIS ACCESSIBILITY CODE, THE ILLINOIS ENVIRONMENTAL BARRIERS ACT, AND ADA.
14. SIDEWALKS SHALL BE CONSTRUCTED IN A MANNER TO FACILITATE PROPER DRAINAGE, IN NO CASE SHALL SIDEWALK OBSTRUCT THE NECESSARY DRAINAGE OF THE SURROUNDING AREA
15. COLD WHEATER PROTECTION SHALL BE REQUIRED IF THE AMBIENT AIR TEMPERATURES DROP BELOW 32-DEGREES F AND LEFT ON UNTIL CURED

TIE BAR DETAIL

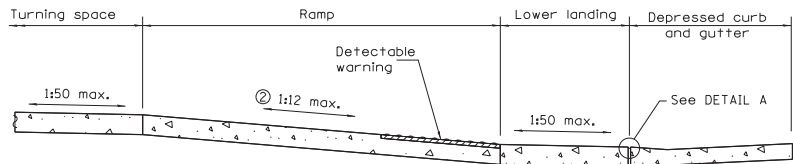




RAMPS IN LANDSCAPED AREA
SETBACK ≤ 5'

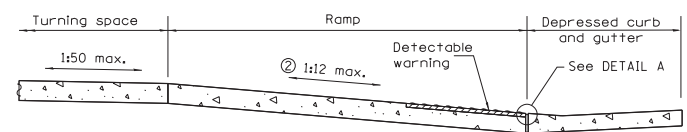


RAMPS IN PAVED AREA
SETBACK ≤ 5'



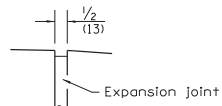
SECTION A-A

② The running slope of the curb ramp shall not require the ramp length to exceed 15' (4.5 m).

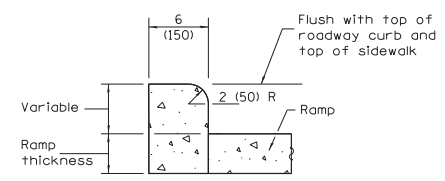


SECTION B-B

② The running slope of the curb ramp shall not require the ramp length to exceed 15' (4.5 m).



DETAIL A



SIDE CURB DETAIL

See Sheet 2 for GENERAL NOTES.

Illinois Department of Transportation

PASSED January 1, 2017

ENGINEER OF POLICY AND PROCEDURES

APPROVED January 1, 2017

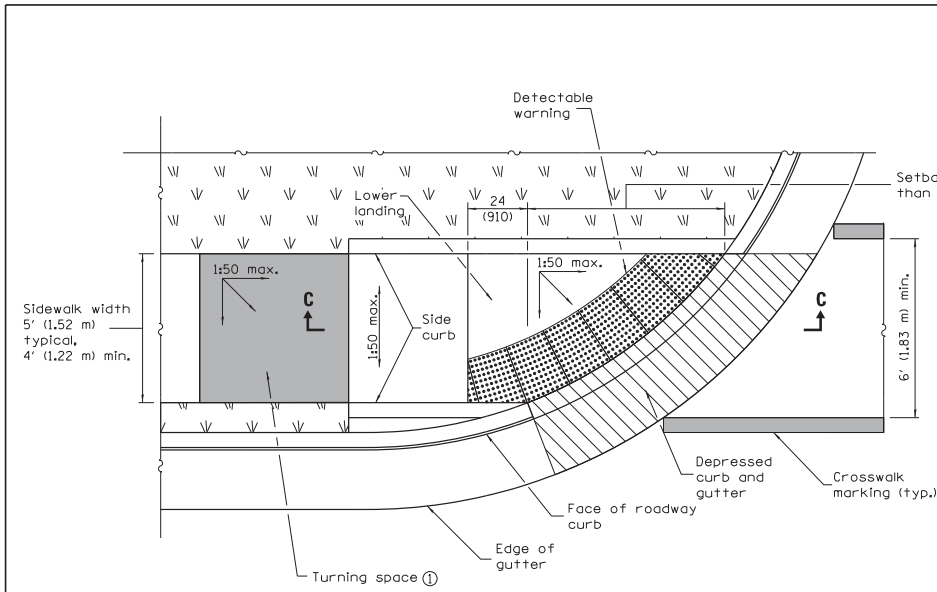
ENGINEER OF DESIGN AND ENVIRONMENT

DATE	REVISIONS
1-1-17	Added 2' dimension to det. warnings for setbacks greater than 5'.
1-1-15	① not appl. to int. sidewalks. Rev. gen. notes. Ch'd Upper landing to Turning space.

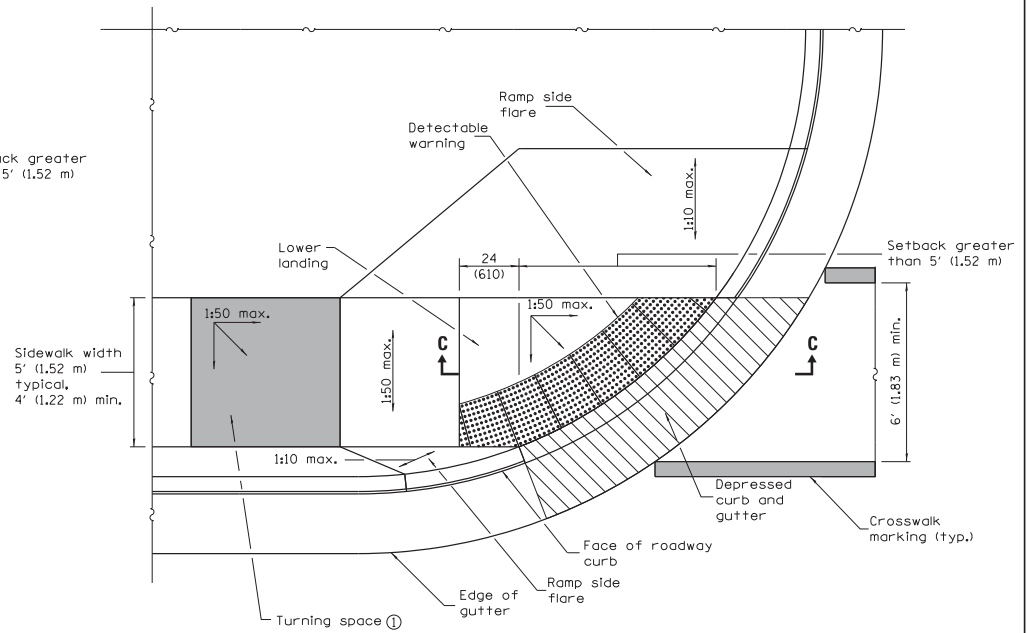
PERPENDICULAR CURB RAMPS FOR SIDEWALKS

(Sheet 1 of 2)

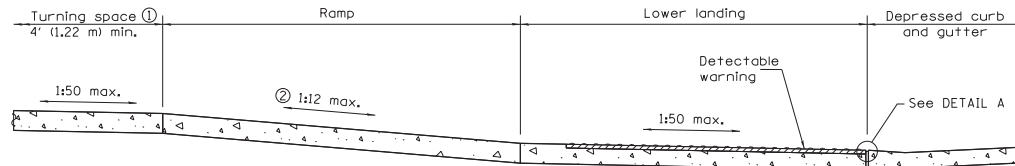
STANDARD 424001-09



**RAMP IN LANDSCAPED AREA
SETBACK > 5'**



**RAMP IN PAVED AREA
SETBACK > 5'**



SECTION C-C

- ① Turning space not required for ramp slopes flatter than 1:20.
- ② The running slope of the curb ramp shall not require the ramp length to exceed 15' (4.5 m).

GENERAL NOTES

All slope ratios are expressed as units of vertical displacement to units of horizontal displacement (V:H).

Where the turning space is constrained on a side opposite a ramp, the minimum length of the turning space in the direction of the ramp-run shall be 5' (1.52 m).

Where 1:50 maximum slope is shown, 1:64 is preferred.

See Standard 606001 for details of depressed curb adjacent to curb ramp.

All dimensions are in inches (millimeters) unless otherwise shown.

**PERPENDICULAR CURB RAMPS
FOR SIDEWALKS**

(Sheet 2 of 2)

STANDARD 424001-09

PASSED January 1, 2017 <i>Michael Beard</i> ENGINEER OF POLICY AND PROCEDURES	1515150 48-1-1-17
APPROVED January 1, 2017 <i>Marcus M. Bels</i> ENGINEER OF DESIGN AND ENVIRONMENT	