

# **VILLAGE OF MINOOKA**

## **Construction Standards and Specifications For General**

Specifications and Standards presented herein shall comply with:

1. The Village of Minooka's Comprehensive Plan
2. Wastewater Facility Plan
3. Potable Water Facility Plan
4. The Village of Minooka's Ordinances
5. All applicable federal, state, and county regulations

In the event of conflict with various regulations, plans, etc. the most restrictive regulations should apply. No work shall begin until the following minimum conditions are met:

1. All easements, access , etc. obtained
2. All permits obtained
3. Security posted
4. Preconstruction meeting held
5. Shop drawings approved
6. Public Works Department condination
7. Village Engineer concurrence to begin work
8. Payment of all fees

All subdivisions which have less than 75% occupancy, or without surface course, whichever is more restrictive, shall be swept weekly.

# VILLAGE OF MINOOKA

## AS BUILT REQUIREMENTS

All AS-BUILT submittals shall include

1. (2) CD in .DGN or .DWG format, and .pdf format
2. 2 full sets of mylar drawings
3. 6 full sets of paper drawings  
submitted to the Village Engineer  
showing the following minimum information:

- street and lot layout;
- street names;
- lot numbers;
- watermain layout;
- sanitary sewer layout;
- storm sewer layout;

#### WATERMAIN

- watermain sizes;
- watermain valves and hydrants locations (station and offset) and sizes;
- watermain service locations from nearest downstream sanitary M-H
- Village numbering on watermain valves and hydrants

#### SANITARY

- sanitary sewer M-H locations (station and offset)
- sanitary M-H rim & inverts
- sanitary main size, lengths & slopes;
- sanitary service locations from nearest down stream sanitary M-H
- Village numbering on sanitary manholes

#### STORM

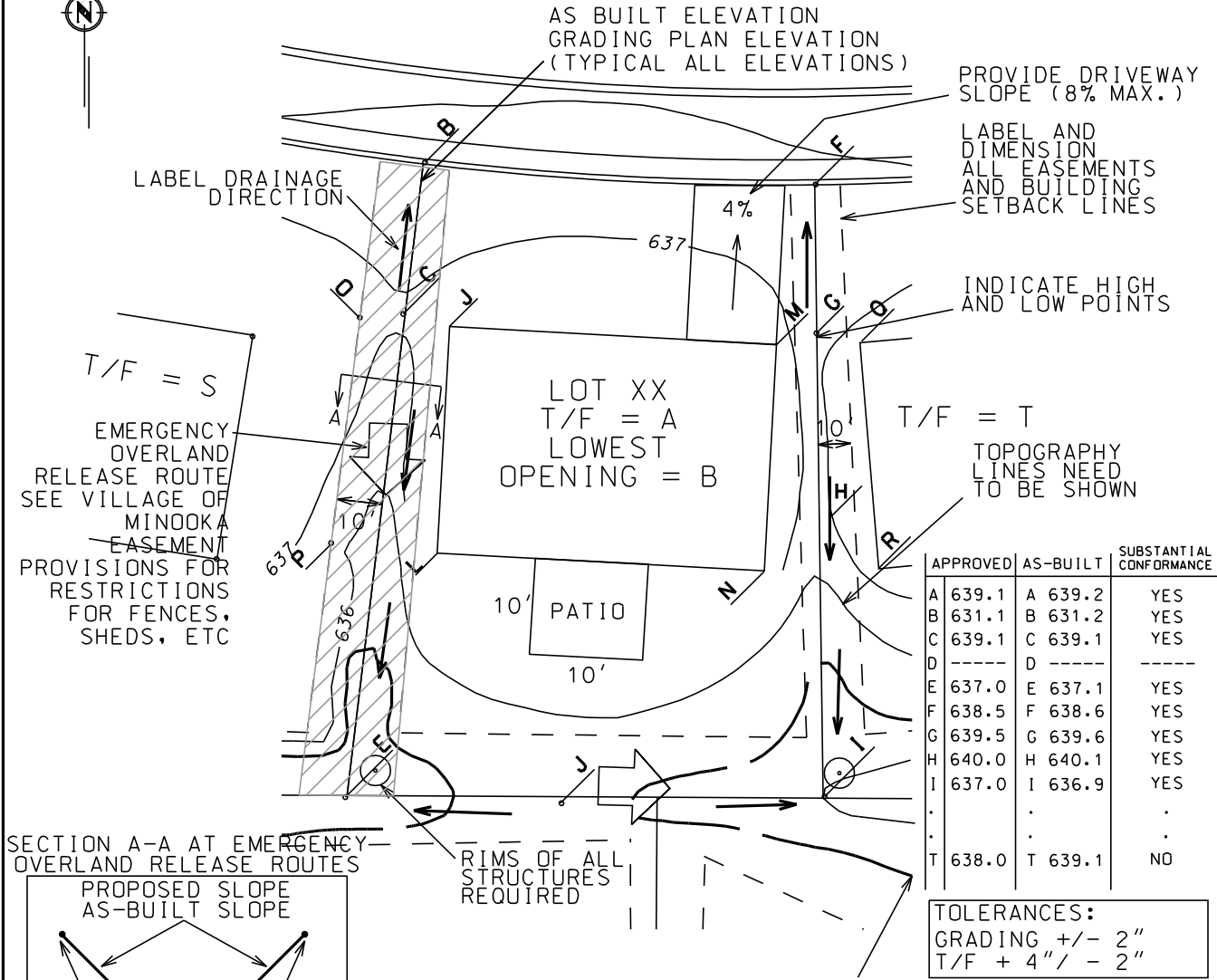
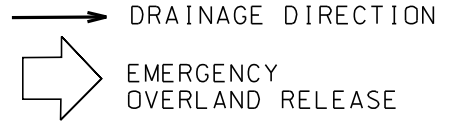
- storm sewer structure locations (station and offset)
- storm sewer structure rim & inverts and RESTRICTOR information/location
- storm sewer main lengths & slopes
- sump service locations verified
- spot elevation and dimensions of stormwater detention/retention facilities to verify stormwater detention facility sizing.
- Village numbering on storm structures

#### ELECTRICAL

- see electrical standards

# GRADING PLAN SUBMITTAL FINISHED LOT GRADING SURVEY

LOT XX OF UNIT X OF XXX SUBDIVISION  
123 XXX STREET, MINOOKA, IL  
BUILDER: XXX



(NOT ALL INFORMATION SHOWN FOR CLARITY.)

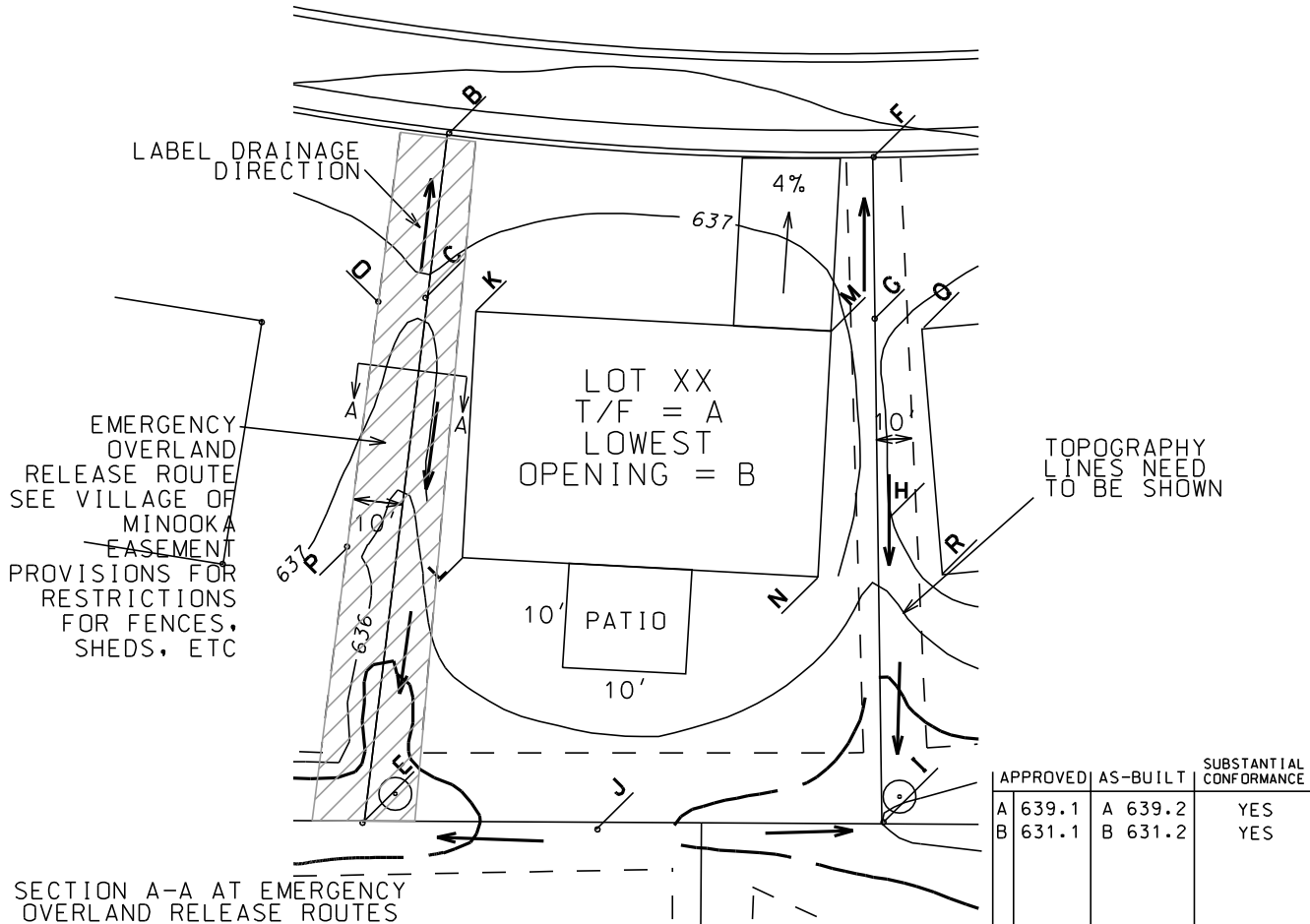
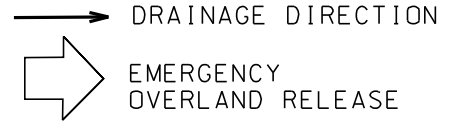
THE FINISHED LOT GRADING SURVEY IS IN SUBSTANTIAL CONFORMANCE WITH THE APPROVED ENGINEERING PLANS FOR THE LOT.

-----  
REGISTERED LAND SURVEYOR  
OR REGISTERED PROFESSIONAL ENGINEER

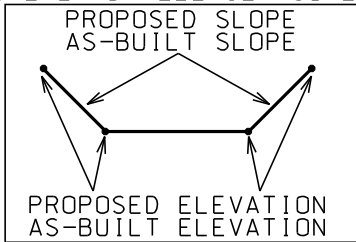
(STAMPED)

# TOP OF FOUNDATION SUBMITTAL

LOT XX OF UNIT X OF XXX SUBDIVISION  
 123 XXX STREET, MINOOKA, IL  
 BUILDER: XXX



SECTION A-A AT EMERGENCY OVERLAND RELEASE ROUTES



	APPROVED	AS-BUILT	SUBSTANTIAL CONFORMANCE
A	639.1	A 639.2	YES
B	631.1	B 631.2	YES

TOLERANCES:  
 T/F + 4" / - 2"

(NOT ALL INFORMATION SHOWN FOR CLARITY.)

THE FINISHED TOP OF FOUNDATION IS IN SUBSTANTIAL CONFORMANCE WITH THE APPROVED ENGINEERING PLANS FOR THE LOT.

(STAMPED)

-----  
 REGISTERED LAND SURVEYOR  
 OR REGISTERED PROFESSIONAL ENGINEER

# INITIAL IMPROVEMENT SECURITY

## CATEGORY 1 - UNDERGROUND, EARTHWORK AND EROSION CONTROL (ONSITE)

### SOIL EROSION SEDIMENT CONTROL

RIP RAP	425 SY	\$37.00	\$15,725
BLANKET, EROSION	600 SY	\$5.00	\$3,000
FILTER FABRIC	1,025 SY	\$1.90	\$1,948
SEEDING	6.5 AC	\$2,500.00	\$16,250
SILT FENCING	2,635 LF	\$2.00	\$5,270
STABILIZED ENTRANCE	2 EA	\$3,500.00	\$7,000
STRAW BALES	208 EA	\$60.00	\$12,480
			<u>\$61,673</u>

### EARTHWORK IMPROVEMENTS

TOPSOIL, STRIP	34,000 CY	\$2.00	\$68,000
TOPSOIL, RESPREAD	4,000 CY	\$3.50	\$14,000
CLAY CUT TO FILL	40,000 CY	\$2.50	\$100,000
UNDERCUT CUT & FILL CLAY	48,000 CY	\$6.00	\$288,000
CLAY FILL FROM STOCKPILE	26,000 CY	\$2.20	\$57,200
TOPSOIL FILL - UNDERCUT/BERMS	58,000 CY	\$2.00	\$116,000
			<u>\$643,200</u>

### DRAINAGE IMPROVEMENTS

24" INLET	22 EA	\$675.00	\$14,850
48" STORM MANHOLE, TY. A	42 EA	\$1,200.00	\$50,400
48" CATCH BASIN, TY. A	1 EA	\$1,500.00	\$1,500
12" STORM SEWER, RCP, CL IV	2,767 LF	\$20.50	\$56,724
STORM TRENCH BACK FILL	1,142 LF	\$12.00	\$13,704
24" FLARED END SECTION, W/ GRATE	1 EA	\$900.00	\$900
REMOVE/REPLACE F.E.S.	4 EA	\$155.00	\$620
4" STORM SERVICE, PVC SDR	91 EA	\$225.00	\$20,475
			<u>\$159,173</u>

### WATER MAIN IMPROVEMENTS

CONNECT TO EXISTING WM STUB, 8"/12"	2 EA	\$850.00	\$1,700
FIRE HYDRANT W/ AUX. VALVE AND BOX	13 EA	\$2,000.00	\$26,000
VALVE	9 EA	\$1,850.00	\$16,650
WATER SERVICES, W/B-BOX, 1" LONG	28 EA	\$875.00	\$24,500
WATER SERVICES, W/B-BOX, 1" SHORT	63 EA	\$375.00	\$23,625
WM TRENCH BACK FILL	2,373 LF	\$7.50	\$17,798
8" WM, DI CL 52 W/FITTINGS	4,658 LF	\$21.00	\$97,818
12" WM, DI CL 52 W/FITTINGS	1,775 LF	\$30.00	\$53,250
WM TRENCH BACK FILL	485 LF	\$15.00	\$7,275
REMOVE/REPLACE WITH SUPPLIED FH	1 EA	\$1,500.00	\$1,500
PRESS. RED. VALVE IN 6' DIA. VAULT	1 EA	\$8,700.00	\$8,700
			<u>\$255,416</u>

### SANITARY SEWER IMPROVEMENTS

SANITARY MANHOLE, TY. A	21 EA	\$2,000.00	\$42,000
8" SANITARY SEWER, 10' DEEP	2,274 LF	\$17.50	\$39,795
SANITARY TRENCH BACK FILL, 10' DEEP	1,853 LF	\$26.00	\$48,178
SANITARY SERVICES, LONG, 10' DEEP	43 EA	\$1,250.00	\$53,750
SANITARY SERVICES, SHORT, 10' DEEP	48 EA	\$350.00	\$16,800
SANITARY TRENCH BACK FILL, SERVICE	4,500 LF	\$23.00	\$103,500
LIFT STATION	1 EA	\$60,000.00	\$60,000
GENERATOR	1 EA	\$20,000.00	\$20,000
			<u>\$384,023</u>

# INITIAL IMPROVEMENT SECURITY

## CATEGORY 1 - UNDERGROUND, EARTHWORK AND EROSION CONTROL (OFFSITE)

### WATERMAIN

12" WM, DI CL 52 W/FITTINGS	575 LF	\$21.00	\$12,075
VALVE	2 EA	\$1,850.00	\$3,700
FIRE HYDRANT W/ AUX. VALVE AND BOX	2 EA	\$2,000.00	\$4,000
			\$19,775

### STATE HIGHWAY IMPROVEMENTS

UNDERCUT CUT & FILL CLAY	20,000 CY	\$6.00	\$120,000
TOPSOIL FILL - UNDERCUT/BERMS	29,000 CY	\$2.00	\$58,000
24" INLET	2 EA	\$675.00	\$1,350
24" STORM SEWER RCP, CL IV	400 LF	\$35.00	\$14,000
24" FLARED END SECTION, W/ GRATE	1 EA	\$900.00	\$900
			\$194,250

TOTAL, CATEGORY 1 = \$1,717,510

## CATEGORY 2 - BASIC ROADWAY IMPROVEMENTS (ONSITE)

CURB & GUTTER	10,538 LF	\$10.50	\$110,649
23' STREET LIGHT COMPLETE	19 EA	\$2,500.00	\$47,500
SIGN POST	5 EA	\$210.00	\$1,050
STOP SIGN	11 EA	\$90.00	\$990
THERMO. PVMT MARKING, 24" LINE	99 LF	\$4.00	\$396
AGGREGATE BASE, TYPE B, 2" FOR C&G	2,900 SY	\$7.25	\$21,025
AGGREGATE BASE, TYPE B, 10"	16,900 SY	\$7.25	\$122,525
BITUMINOUS BINDER COURSE, 2.5", CL 1	16,900 SY	\$3.75	\$63,375
REMOVE/REPLACE CURB AND GUTTER	25 LF	\$22.00	\$550
PAVEMENT REMOVAL	200 SF	\$5.55	\$1,110
REMOVE/REPLACE PCC SIDEWALK	70 SF	\$10.00	\$700
			\$369,870

## CATEGORY 2 - BASIC ROADWAY IMPROVEMENTS (OFFSITE)

### STATE HIGHWAY IMPROVEMENTS

CURB & GUTTER	400 LF	\$10.50	\$4,200
23' STREET LIGHT COMPLETE	4 EA	\$2,500.00	\$10,000
THERMO. PVMT MARKING, 24" LINE	400 LF	\$4.00	\$1,600
AGGREGATE BASE, TYPE B, 2" FOR C&G	25 SY	\$7.25	\$181
AGGREGATE BASE, TYPBE B, 10"	150 SY	\$7.25	\$1,088
			\$17,069

TOTAL, CATEGORY 2 = \$386,939

## CATEGORY 3 - SURFACE IMPROVEMENTS (ONSITE)

### ROADWAY IMPROVEMENTS

BITUMINOUS SURFACE COURSE, 1.5"CL 1	16,900 SY	\$3.50	\$59,150
BITM MATLS, PRIME COAT, MC-30	8,450 GAL	\$1.25	\$10,563
CA6-4", 5' PCC SIDEWALK	51,300 SF	\$3.50	\$179,550
PARKWAY RESTORATION	2500 LF	\$10.00	\$25,000
TREES	20 EA	\$250.00	\$5,000
DRIVEWAYS	91 EA	\$1000.00	\$91,000
			\$370,263

## CATEGORY 3 - SURFACE IMPROVEMENTS (OFFSITE)

### STATE HIGHWAY IMPROVEMENTS

BITUMINOUS SURFACE COURSE, 1.5"CL 1	150 SY	\$3.50	\$525
BITM MATLS, PRIME COAT, MC-30	75 GAL	\$1.25	\$94
CA6-4", 5' PCC SIDEWALK	4000 SF	\$3.50	\$14,000
			\$14,619

TOTAL, CATEGORY 3 = \$384,882

TOTAL, ALL CATEGORY'S = \$2,489,331  
PLUS 25% = \$622,333

SECURITY AMOUNT = \$3,111,664

# FIRST REDUCTION OF IMPROVEMENT SECURITY

CATEGORY 1 - COMPLETED		\$171,751	(10% MAINTENANCE OF ORIGINAL AMOUNT. MAINTAINED FOR 24 MONTHS.)
CATEGORY 2 - BASIC ROADWAY IMPROVEMENTS (ONSITE)			
CURB & GUTTER	10,538 LF	\$10.50	\$110,649
23' STREET LIGHT COMPLETE	19 EA	\$2,500.00	\$47,500
SIGN POST	5 EA	\$210.00	\$1,050
STOP SIGN	11 EA	\$90.00	\$990
THERMO. PVMT MARKING, 24" LINE	99 LF	\$4.00	\$396
AGGREGATE BASE, TYPE B, 2" FOR C&G	2,900 SY	\$7.25	\$21,025
AGGREGATE BASE, TYPE B, 10"	16,900 SY	\$7.25	\$122,525
BITUMINOUS BINDER COURSE, 2.5", CL 1	16,900 SY	\$3.75	\$63,375
REMOVE/REPLACE CURB AND GUTTER	25 LF	\$22.00	\$550
PAVEMENT REMOVAL	200 SF	\$5.55	\$1,110
REMOVE/REPLACE PCC SIDEWALK	70 SF	\$10.00	\$700
			<hr/>
CATEGORY 2 - ROADWAY IMPROVEMENTS (OFFSITE)		\$369,870	
STATE HIGHWAY IMPROVEMENTS			
CURB & GUTTER	400 LF	\$10.50	\$4,200
23' STREET LIGHT COMPLETE	4 EA	\$2,500.00	\$10,000
THERMO. PVMT MARKING, 24" LINE	400 LF	\$4.00	\$1,600
AGGREGATE BASE, TYPE B, 2" FOR C&G	25 SY	\$7.25	\$181
AGGREGATE BASE, TYPBE B, 10"	150 SY	\$7.25	\$1,088
			<hr/>
CATEGORY 3 - SURFACE IMPROVEMENTS (ONSITE)		\$17,069	TOTAL, CATEGORY 2 = \$386,939
ROADWAY IMPROVEMENTS			
BITUMINOUS SURFACE COURSE, 1.5"CL 1	16,900 SY	\$3.50	\$59,150
BITM MATLS, PRIME COAT, MC-30	8,450 GAL	\$1.25	\$10,563
CA6-4", 5' PCC SIDEWALK	51,300 SF	\$3.50	\$179,550
PARKWAY RESTORATION	2500 LF	\$10.00	\$25,000
TREES	20 EA	\$250.00	\$5,000
DRIVEWAYS	91 EA	\$1000.00	\$91,000
			<hr/>
CATEGORY 3 - SURFACE IMPROVEMENTS (OFFSITE)		\$370,263	
STATE HIGHWAY IMPROVEMENTS			
BITUMINOUS SURFACE COURSE, 1.5"CL 1	150 SY	\$3.50	\$525
BITM MATLS, PRIME COAT, MC-30	75 GAL	\$1.25	\$94
CA6-4", 5' PCC SIDEWALK	4000 SF	\$3.50	\$14,000
			<hr/>
		\$14,619	TOTAL, CATEGORY 3 = \$384,882

TOTAL CATEGORY 2 AND CATEGORY 3 = \$771,821  
 PLUS 25% = \$192,955  
 PLUS CATEGORY 1 MAINTENANCE = \$171,751  
 SECURITY AMOUNT = \$1,136,527

# SECOND REDUCTION OF IMPROV. SECURITY

CATEGORY 1 - COMPLETED	\$171,751 (10% MAINTENANCE OF ORIGINAL AMOUNT (EXPIRATION DATE))
CATEGORY 2 - COMPLETED	\$38,694 (10% MAINTENANCE OF ORIGINAL AMOUNT MAINTAINED FOR 24 MONTHS.)
CATEGORY 3 - SURFACE IMPROVEMENTS (ONSITE)	

ROADWAY IMPROVEMENTS

BITUMINOUS SURFACE COURSE, 1.5"CL 1	16,900 SY	\$3.50	\$59,150
BITM MATLS. PRIME COAT. MC-30	8,450 GAL	\$1.25	\$10,563
CA6-4". 5' PCC SIDEWALK	51,300 SF	\$3.50	\$179,550
PARKWAY RESTORATION	2500 LF	\$10.00	\$25,000
TREES	20 EA	\$250.00	\$5,000
DRIVEWAYS	91 EA	\$1000.00	\$91,000
			\$370,263

CATEGORY 3 - SURFACE IMPROVEMENTS (OFFSITE)

STATE HIGHWAY IMPROVEMENTS

BITUMINOUS SURFACE COURSE, 1.5"CL 1	150 SY	\$3.50	\$525
BITM MATLS. PRIME COAT. MC-30	75 GAL	\$1.25	\$94
CA6-4". 5' PCC SIDEWALK	4000 SF	\$3.50	\$14,000
			\$14,619

TOTAL, CATEGORY 3 = \$384,882

TOTAL, CATEGORY 3 = \$384,882  
 PLUS 25% = \$96,221  
 PLUS CATEGORY 1 MAINTENANCE = \$171,751  
 PLUS CATEGORY 2 MAINTENANCE = \$ 38,694  
 SECURITY AMOUNT = \$691,548



# THIRD REDUCTION OF IMPROV. SECURITY

CATEGORY 1 - COMPLETED

\$171,751 (10% MAINTENANCE OF ORIGINAL  
AMOUNT(EXPIRATION DATE))

CATEGORY 2 - COMPLETED

\$38,694 (10% MAINTENANCE OF ORIGINAL  
AMOUNT(EXPIRATION DATE))

CATEGORY 3 - COMPLETED

\$38,488 (10% MAINTENANCE OF ORIGINAL  
AMOUNT(24 MONTH  
MAINTENANCE PERIOD))

CATEGORY 1 MAINTENANCE = \$171,751  
CATEGORY 2 MAINTENANCE = \$ 38,694  
CATEGORY 3 MAINTENANCE = \$ 38,488

SECURITY AMOUNT = \$248,933

# RELEASE OF IMPROVEMENT SECURITY

CATEGORY 1 - WORK REMAINING	\$0
CATEGORY 2 - WORK REMAINING	\$0
CATEGORY 3 - WORK REMAINING	\$0

TOTAL REMAINING, ALL CATEGORY'S = \$0